



Status and key developments

Status 2019

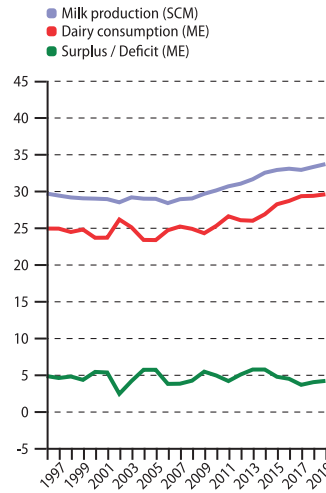
- No. 4 (↑ 1) in the world milk production: 33.6 mill t SCM
- Farm-gate milk price 3% above the world market price
- 114% self-sufficiency in milk (ME)
- 3.7% of cow's milk production is organic

Key developments 2014–2019

- Milk production increased by 0.7% per year
- Number of dairy farms decreased by 4.8% per year
- Average milk yield increased by 2.1% per year

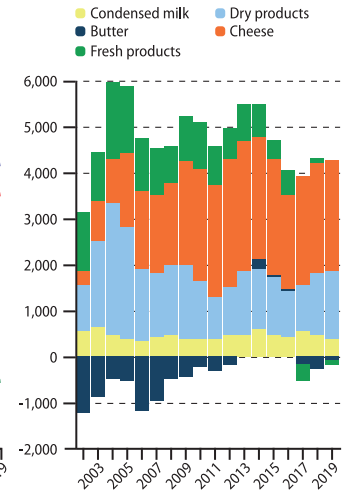
Milk balance

in mill t, from all dairy animals



Net trade balance

in 1,000 t ME, from all dairy animals

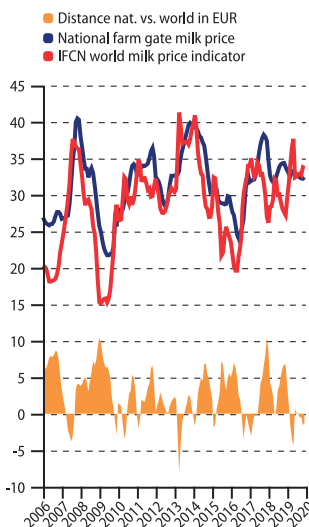


Key variables

	1996	2000	2003	2006	2009	2012	2014	2016	2017	2018	2019	Annual change	'09-'14	'14-'19
Milk production (cow's)														
Production (mill t SCM)	29.57	28.87	29.04	28.26	29.52	30.90	32.39	32.94	32.78	33.18	33.57	1.9%	0.7%	
Cows (in 1,000's)	5,194.7	4,563.6	4,337.5	4,054.4	4,169.4	4,190.5	4,295.7	4,217.7	4,199.0	4,100.9	4,011.7	0.6%	-1.4%	
Milk yield (t SCM/cow)	5.69	6.33	6.70	6.97	7.08	7.37	7.54	7.81	7.81	8.09	8.37	1.3%	2.1%	
Dairy consumption (all)														
Country consumption (mill t ME)	24.83	23.57	25.00	24.60	24.19	25.96	26.77	28.58	29.23	29.28	29.49	2.0%	2.0%	
Population (mill people)	81.47	81.46	81.55	81.17	80.48	80.43	80.98	82.35	82.66	82.90	82.97	0.1%	0.5%	
Consumption (kg ME/capita)	304.7	289.4	306.5	303.0	300.6	322.8	330.6	347.1	353.7	353.1	355.4	1.9%	1.5%	
The dairy chain														
Milk delivered (cow's)	94%	95%	96%	96%	97%	97%	97%	96%	96%	96%	96%	0.0%	-0.2%	
Exports/nat. production	39.7%	46.4%	49.3%	48.6%	50.5%	56.0%	56.8%	55.6%	56.9%	55.9%	56.9%	1.3%	0.0%	
Imports/nat. consumption	28.1%	34.3%	41.1%	40.9%	40.6%	47.5%	47.7%	49.4%	51.5%	49.6%	50.6%	1.4%	0.6%	

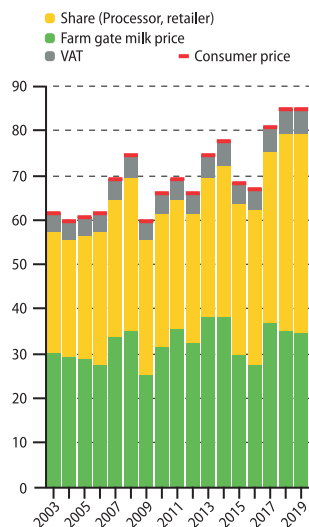
Farm-gate milk price

EUR/100 kg SCM



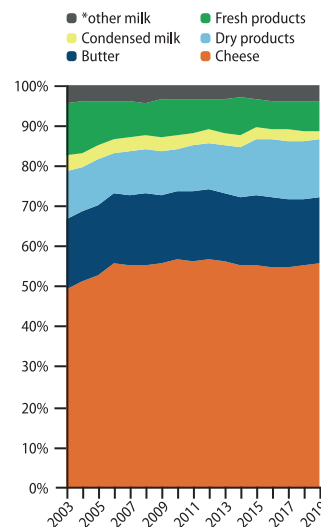
Milk price split

EUR/100 kg SCM



Processing profile

% of all milk produced



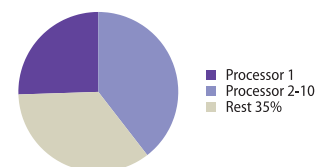
Milk processors

Milk intake in 1,000 t (nat. content) 2019

1. DMK Deutsches Milchkontor GmbH	8,100
2. Hochwald Foods GmbH	2,238
3. Unternehmensgruppe Theo Muller S.e.c.s	2,100
4. Molkerei Ammerland eG	1,806
5. Arla Foods GmbH	1,700
6. Meierei Barmstedt	1,107
7. frischli Milchwerke GmbH	996
8. Goldsteig Käsereien Bayerwald GmbH	950
9. Rucker GmbH	850
10. Bayerische Milchindustrie eG	795

Cooperatives: 47% of milk intake shown

Share on national milk delivery:



Explanations

Method: See Chapter 3.9 for details. **Sources:** National statistics supplemented by data from FAO, IMF, OANDA, GTT, Eurostat, AMI, BLE, BMELV. **Dairy consumption (disappearance):** Milk production (all dairy animals) + imports - exports +/- stock changes. **Data:** 2019 data preliminary and partly estimated. Cooperatives share on milk intake shown in the list is an IFCN estimate based on partner information. **Consumer price (raw data) for:** Fresh milk, 1 litre with 3.5% fat, 3.17% protein. **Remarks:** Milk processor list: Meierei Barmstedt, Theo Mueller & Rucker (2018). ***other milk:** Milk not delivered to dairies and milk from animals other than cow and buffalo. If applicable: Sheep, goat and camel.